

Visualization and analysis of time series data with the time information system HuTime

Tatsuki Sekino

(Research Institute for Humanity and Nature)

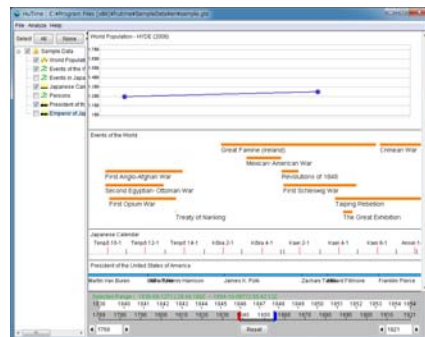
How to use the time information system HuTime

- Overview
- Visualization
What kind of data can be visualized?
- Operation
Record search and Analysis
- Examples
Researches using HuTime
- Let's try
Data construction and related information



Example of the chronological table including various information (Ayutthaya Historical Study Centre)

Time Information System - HuTime



HuTime Stand Alone Version for visualization and analysis

There are two versions of HuTime.



HuTime Web Version (embedded in a webpage) only for visualization

Time Information System - HuTime

HuTime is a software specialized for visualization and analysis of temporal information.

Features

- GIS like operation to visualize and analyze temporal information.
- Specialized for temporal information.

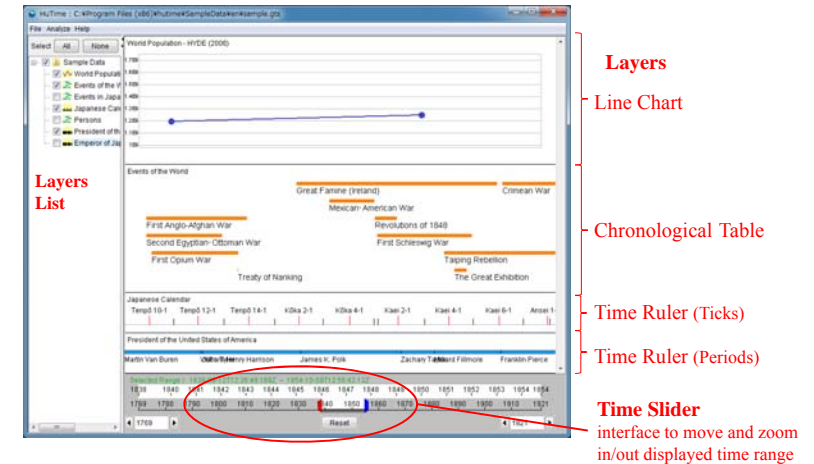
Major Functions

- Chronological tables and charts (line, bar and plot) are displayed on the same temporal axis
- Search and extract of events
- Logical operation between layers
- Time ruler according to different types of calendar system

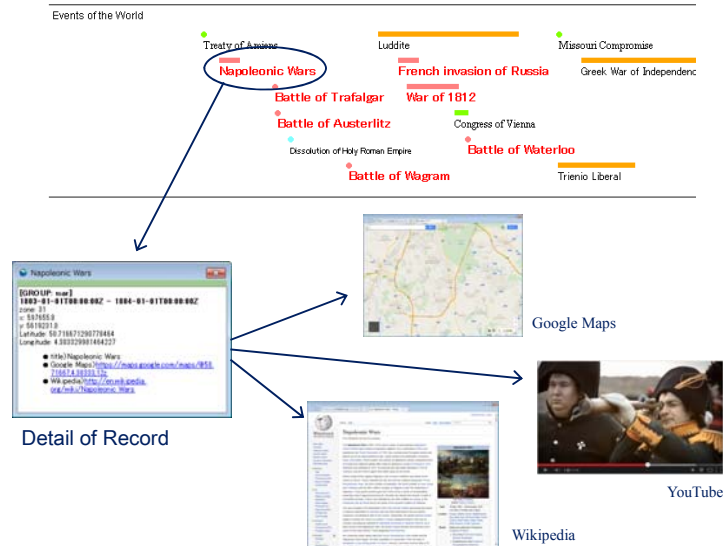


Visualization

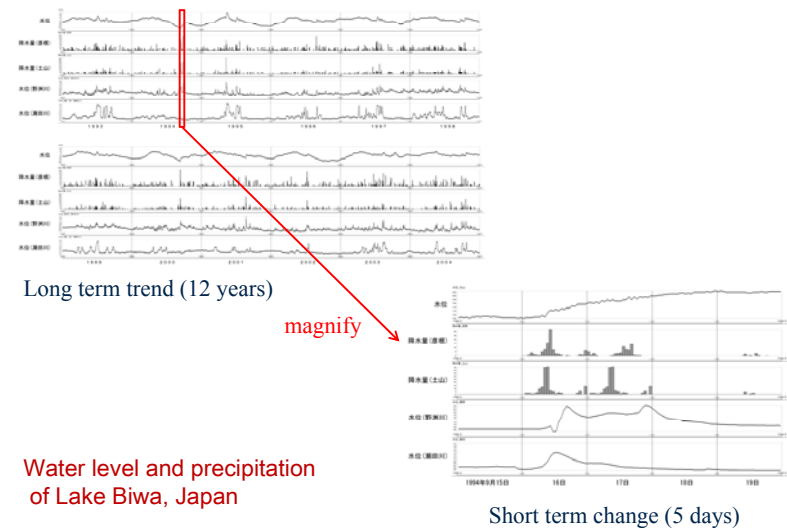
What kind of data can be visualized?



Chronological Tables



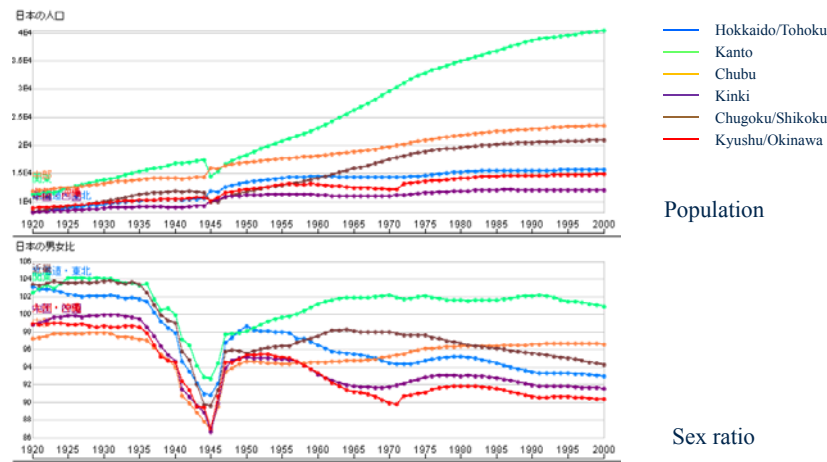
Time Series Charts



Water level and precipitation of Lake Biwa, Japan

Time Series Charts

Population dynamics in Japan

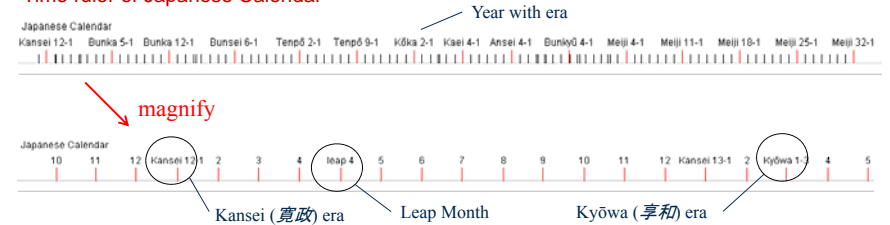


Time ruler

The time rulers are available to show ...

- Regional calendars
- Background to understand focused temporal changes or events

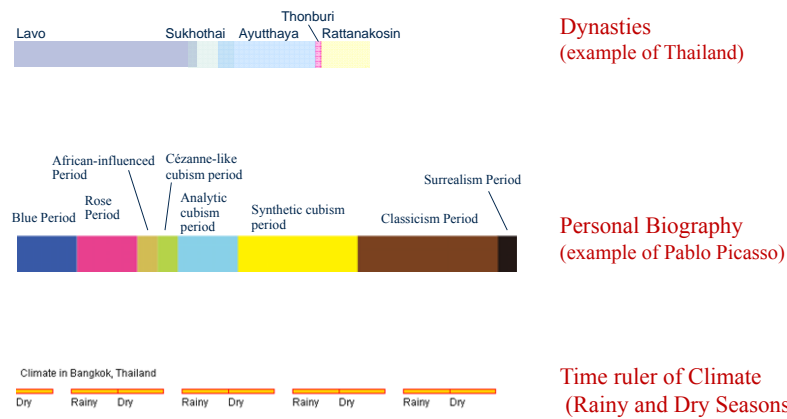
Time ruler of Japanese Calendar



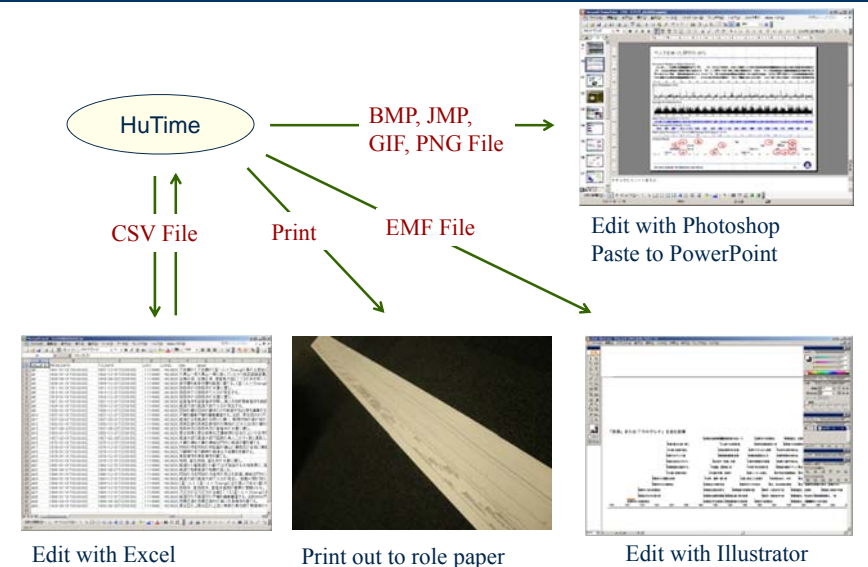
Time ruler of US Presidents



Time ruler



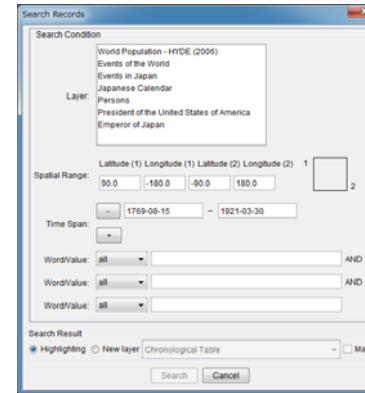
Output formats from HuTime



Operation

Record search and Analysis

Record Search



Characters data

Records contain given words

Numeric data

Records satisfying given condition (Equal, Larger and Smaller)

How to display the search result

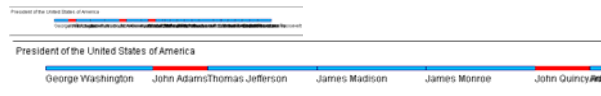
- Highlighting found records
- New layer which consists of found record
- New layer to display period of found records

Other search conditions

- Layer specification
- Temporal and spatial range specification

Record Search

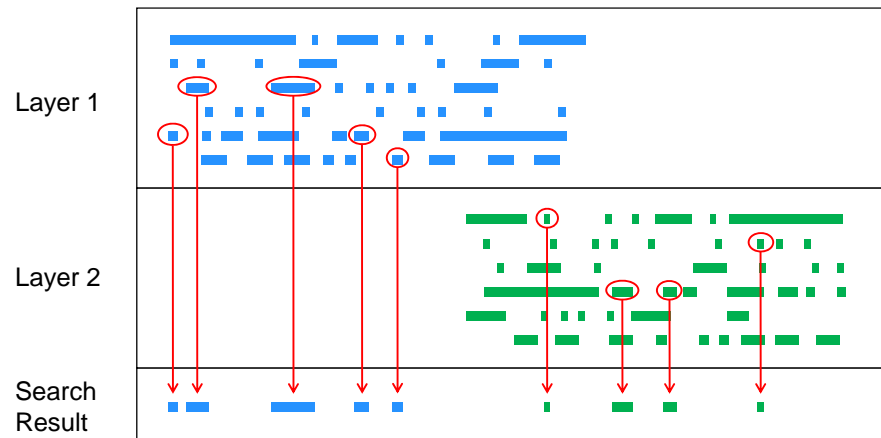
Highlight US Presidents "John ???"



Extract records including keyword "War"



Merge of temporal data with HuTime



Record Search

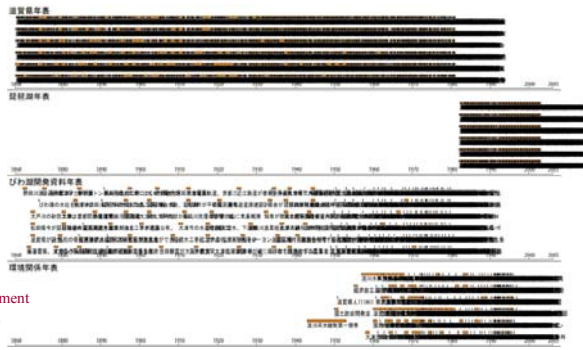
Example for merge of chronological tables

Chronological Table about Shiga Prefecture (Shiga Prefecture)

Chronological Table about Lake Biwa (Lake Biwa Research Institute)

Chronological Table about Documents relating with Lake Biwa Development (Library of Shiga Prefecture)

Chronological Table about Water Resource Development and Environment in Lake Biwa (Executive Committee of Symposium for Issues about Development of Lake Biwa)

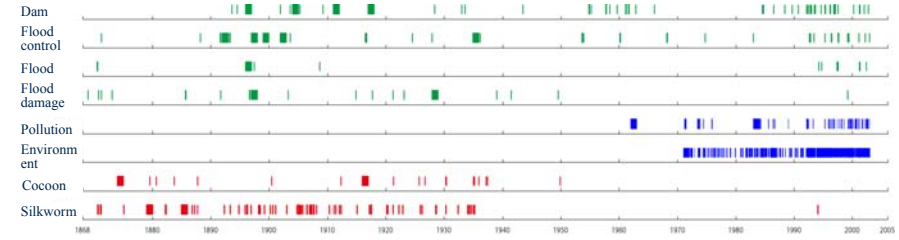
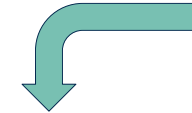
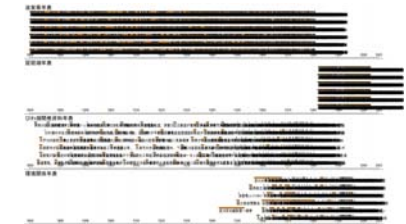


Events including word of "red tide" are extracted from the four tables

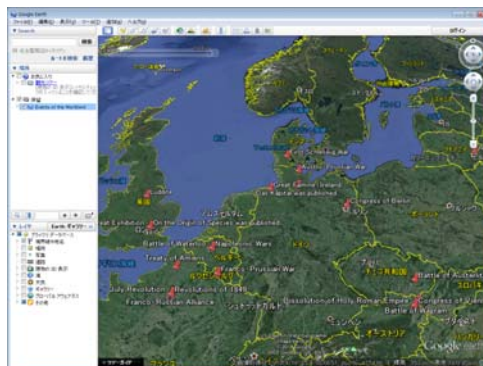
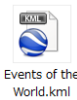
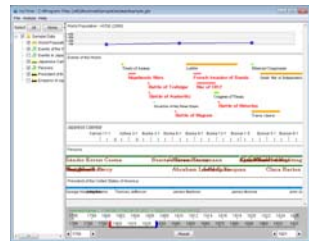
"Red Tide Chronological Table in Lake Biwa"



Periods containing specific words

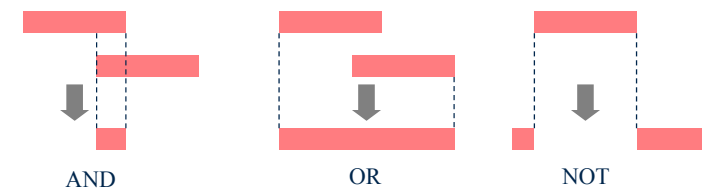


Data Export to Google Earth (kml file)

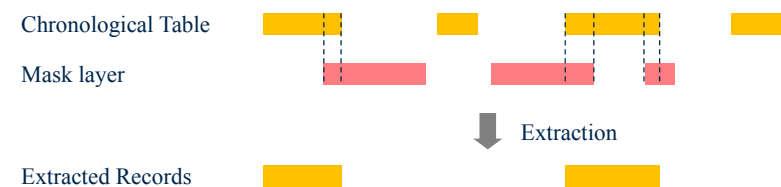


Operations using the mask layer

Logical operation between periods

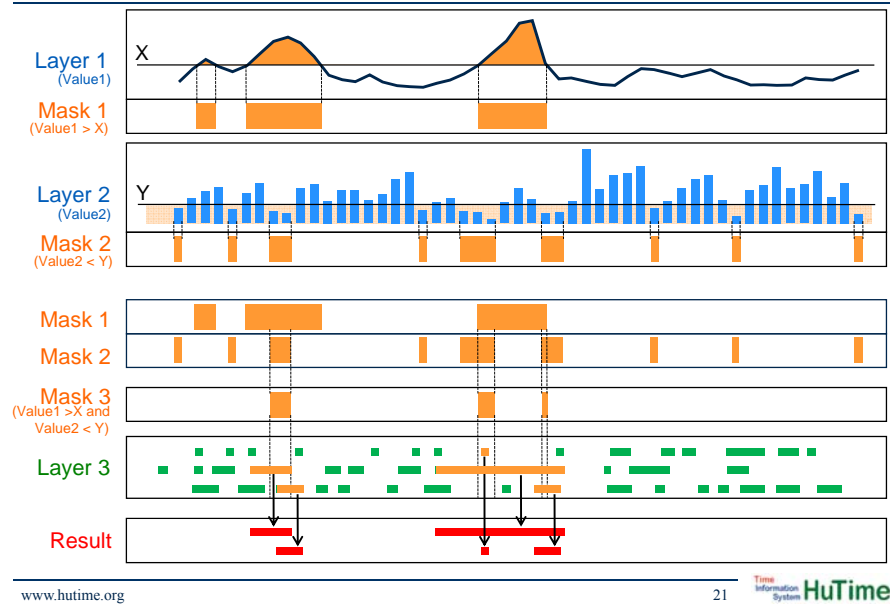


Record extraction (correspond to Clipping in GIS)

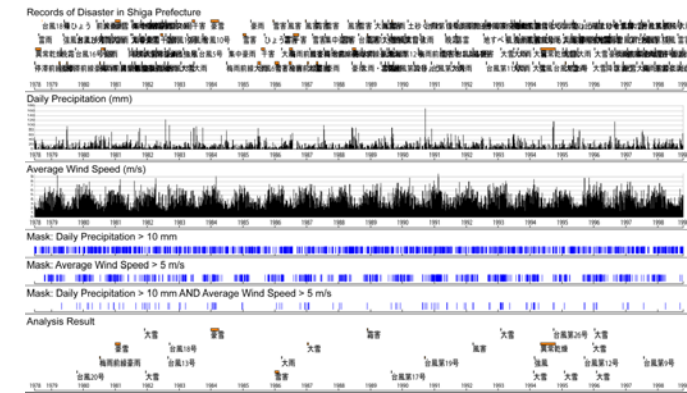


Demonstration – Temporal analysis using HuTime

Temporal Information Analysis using mask layers



What kind of disasters were occurred during heavy rain fall and strong wind?
(Shiga Prefecture, Japan)



Examples

Researches using HuTime

Utilization Example for HuTime

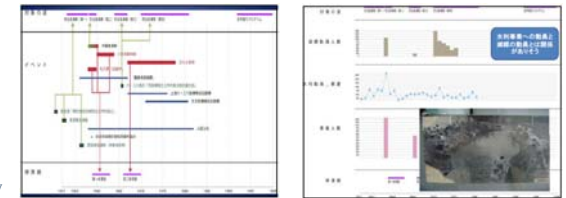
- **Environmental Study:** Relationships between environmental fluctuation and government action
- **Environmental Study:** Chronological table about environmental history
- **Area Study:** Research into the prefectural histories of Yunnan Province, China
- **Area Study:** Trade between Japan and Southeast Asia during the early modern era
- **Health Study:** collection of research documents about schistosomiasis (a parasitic disease) in China
- **Historiography:** Visualization of Shoku Nihongi (続日本紀, Chronicles of Japan, Continued)

Utilization Example for HuTime

Collection of research documents about schistosomiasis (a parasitic disease) in China

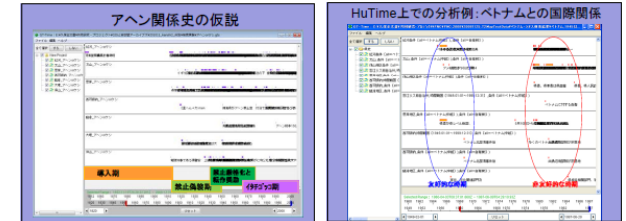
Yuki Fukushi *et al.*
(Research Institute for Humanity and Nature)

HuTime is used to preview the periods covered with collected documents
Important periods can be found from the preview



Research into the prefectural histories of Yunnan Province, China

Masatoshi Kubo
(National Museum of Ethnology)

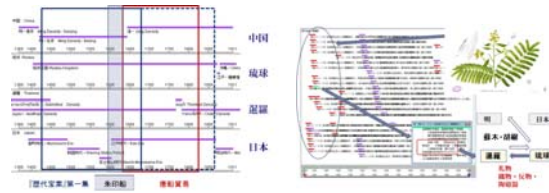


Utilization Example for HuTime

Trade between Japan and Southeast Asia during the early modern era

Mamoru Shibayama (Koto University)

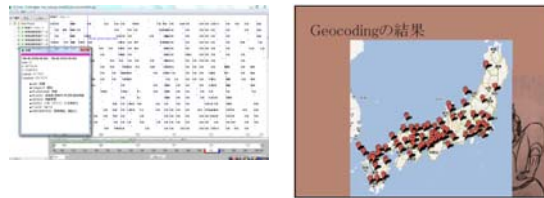
Relationships among historical documents was considered on HuTime
Usage of Time basic data



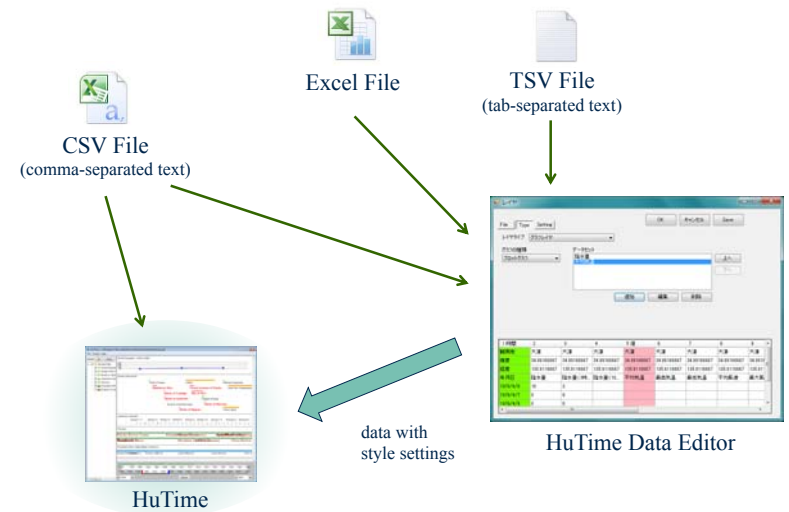
Visualization of Shoku Nihongi (続日本紀, Chronicles of Japan, Continued)

Makoto Goto (Hanazono University)

Difference in trends caused by difference in created periods of the document was found
Data are also displayed on a map.

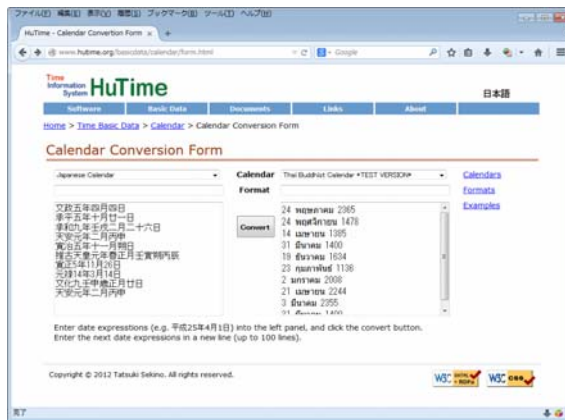


How to make data for HuTime?



Let's try

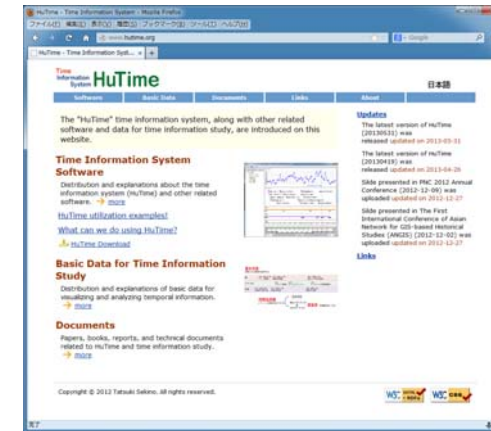
Data construction and related information



Features

- Character strings expressing date are interpreted directly
- Chinese characters and expression in a specific calendar are allowed
- Multiple record are converted at once.
- Interpretation and output of the character strings according to user specified format

<http://www.hutime.org/basicdata/calendar/form.html>



<http://www.hutime.org/>

HuTime and related documents are available